

Guy Laroche

WATCH INFORMATION
INSTRUCTION MANUAL

RONDA xtratech – Movement cal. X30

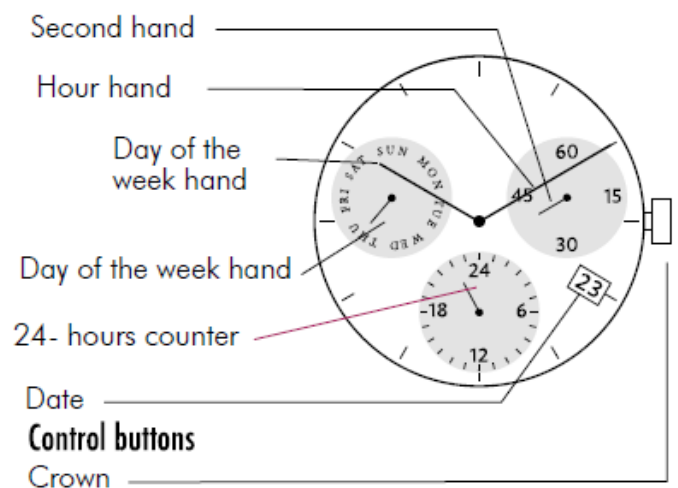
You have decided to buy a watch, which was assembled by a watchmaker using a Ronda movement. Please note that no watches are produced or distributed under the Ronda brand.

In case of repairs, guarantee claims and questions concerning the functioning of a watch, purchasers and consumers should contact their retailer or the watch manufacturer, for which the relevant information can be found in the sales or guarantee documentation provided with the watch.

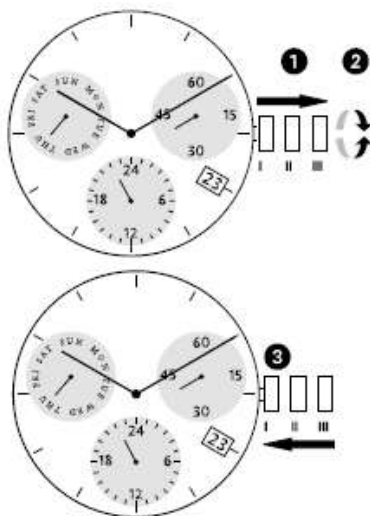
Description of the display and control buttons

Display elements

X30



Setting the time



- 1 * Pull out the crown to position III (the watch stops).
- 2 Turn the crown until you reach the correct time.
- 3 * Push the crown back into position I.

Please note:

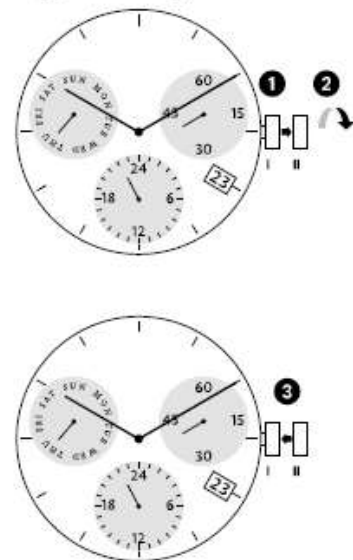
* In order to set the time to the exact second,

1 must be pulled out when the second hand is in position "60".

Once the hour and minute hands have been set,

2 must be pushed back into position I at the exact second.

Setting the date (quick mode)

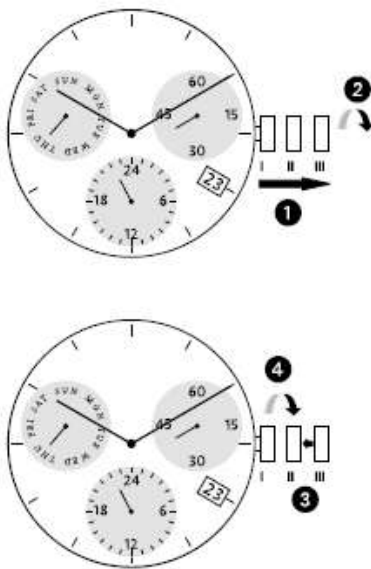


- 1 Pull out the crown to position II (the watch continues to run).
- 2 Turn the crown anticlockwise until the correct date appears.
- 3 Push the crown back into position I.

Please note:

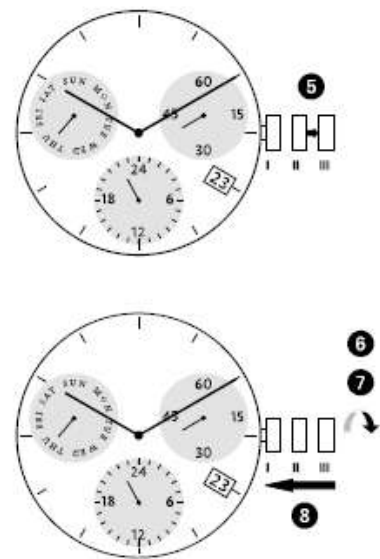
During the date changing phase between approx. 09:45 PM and 12 PM; the date must be set to the date of the following day.

Setting the date, day of the week and time



- 1 Pull out the crown to position III (the watch stops).
- 2 Turn the crown anticlockwise until yesterday's day of the week appears.
- 3 Push the crown to position II.
- 4 Turn the crown until yesterday's date appears.

Setting the date (quick mode)



- 5 * Pull out the crown to position III (the watch stops).
- 6 Turn the crown anticlockwise until the correct date and day of the week appears.
- 7 ** Continue to turn the crown anticlockwise until the correct time appears.
- 8 Push the crown back into position I.

Please note:

* To set your watch to the exact second, please refer to the chapter entitled "setting the time".

** Please observe the AM/PM clock rhythm.