

# Guy Laroche

**WATCH INFORMATION**  
**INSTRUCTION MANUAL**

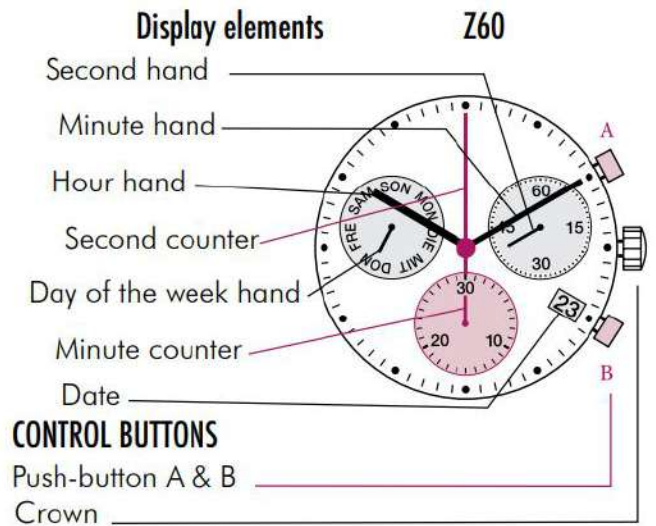
**RONDA Z60 & Z50**  
INSTRUCTION MANUAL

## RONDA STARTECH – MOVEMENT CAL. Z60 & Z50

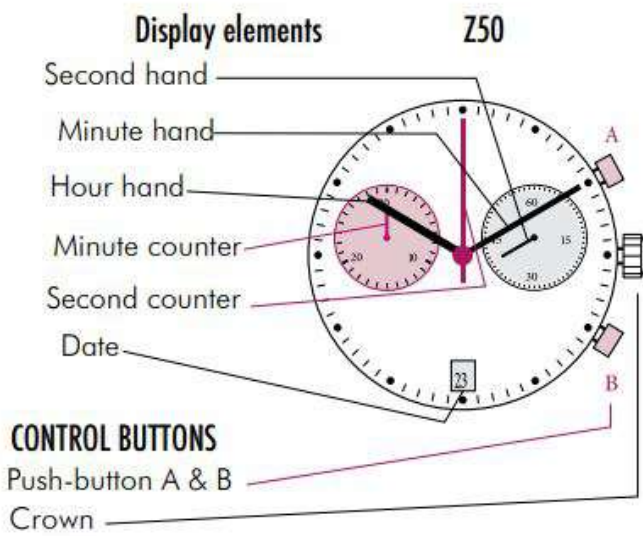
You have decided to buy a watch, which was assembled by a watchmaker using a Ronda movement. Please note that no watches are produced or distributed under the Ronda brand.

In case of repairs, guarantee claims and questions concerning the functioning of a watch, purchasers and consumers should contact their retailer or the watch manufacturer, for which the relevant information can be found in the sales or guarantee documentation provided with the watch.

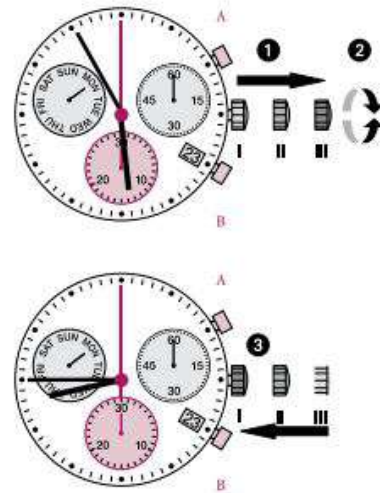
## DESCRIPTION OF THE DISPLAY AND CONTROL BUTTONS



## DESCRIPTION OF THE DISPLAY AND CONTROL BUTTONS



## Setting the time



- ❶ \* Pull out the crown to position III (the watch stops).
- ❷ Turn the crown until you reach the correct time 8:45.
- ❸ \* Push the crown back into position

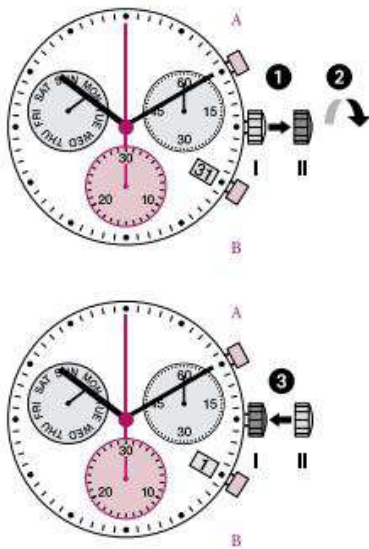
### Please note:

\* In order to set the time to the exact second,

- ❶ must be pulled out when the second hand is in position «60».

Once the hour and minute hands have been set, ❸ must be pushed back into position I at the exact second.

### Setting the date (quick mode)

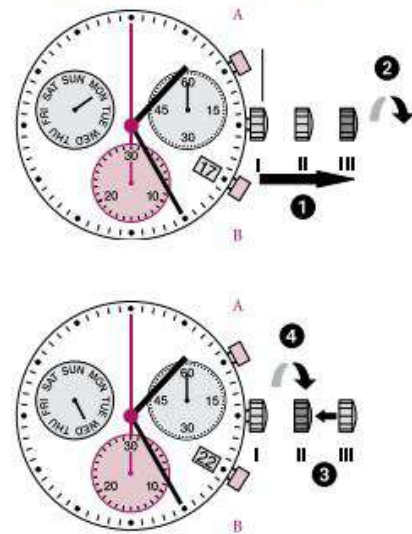


- ❶ Pull out the crown to position II (the watch continues to run).
- ❷ Turn the crown anticlockwise until the correct date 1 appears.
- ❸ Push the crown back into position I.

**Please note:**

During the date changing phase between approx. 09:45 PM and midnight; the date must be set to the date of the following day, at the exact second.

### Setting the date, day of the week (Z60) and time



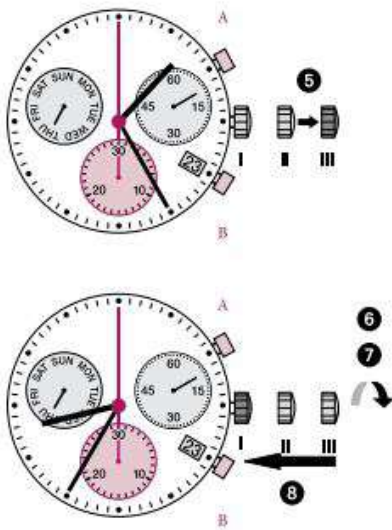
**EXAMPLE:**

- Date / time on the watch: 17 / 01:25 / **MON**
- Present date / time: 23 / 20:35 / **THU**

Pull out the crown to position III (the watch stops).

- ❶ Turn the crown anticlockwise the correct date 23 and day of the week THU appears.
- ❷ Turn the crown until yesterday's date appears 22 .

## Setting the date (quick mode)



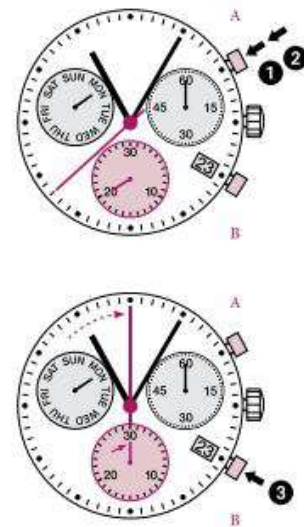
- ❶ \*Pull out the crown to position III (the watch stops). Turn the crown anticlockwise until
- ❷ The correct date 23 and day of the week THU appears.
- ❸ \*\*Continue to turn the crown anticlockwise until the correct time 8:35 PM appears.
- ❹ Push the crown back into position I.

### Please note:

- \* To set your watch to the exact second, please refer to the chapter entitled «setting the time».
- \*\* Please observe the AM/PM clock rhythm.

## CHRONOGRAPH: BASIC FUNCTION

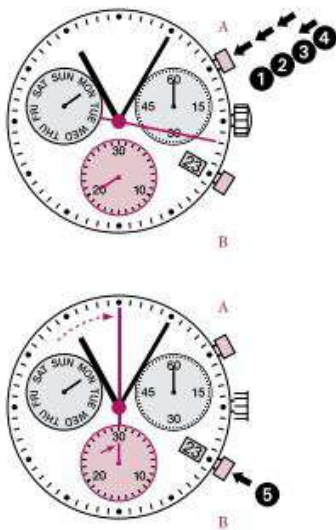
(Start / Stop / Reset)



EXAMPLE:

- ❶ **START:** Press push-button A.
- ❷ **STOP:** to stop the timing, press push-button A once more and read the chronograph counters:  
**20 MIN / 38 SEC**
- ❸ **ZERO POSITIONING:**  
Press push-button B. (The chronograph hands will be reset to their zero positions.)

## CHRONOGRAPH: ACCUMULATED TIMING



Example:

- ❶ Start: (start timing)
- ❷ Stop: (e.g. 15 min 5 sec following ❶)
- ❸ Restart: (timing is resumed)
- ❹ \* Stop: (e.g. 5 min 12 sec following ❸)  
= 20 min 17 sec  
(The accumulated measured time is shown)
- ❺ Reset: The chronograph hands are returned to their zero positions

### Please note:

\* Following ❹, the accumulation of the timing can be continued by pressing push-button A (Restart / Stop, Restart / Stop, ...).

## CHRONOGRAPH: INTERMEDIATE OR INTERVAL TIMING



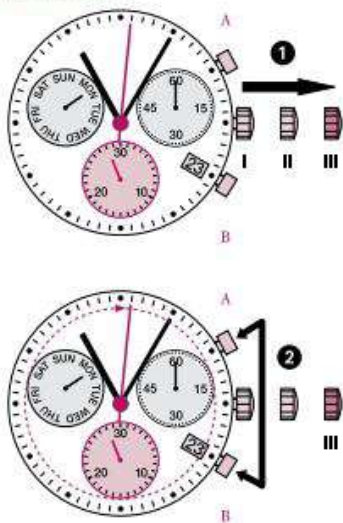
EXAMPLE:

- ❶ Start: (start timing)
- ❷ Display interval: e.g. 20 minutes 17 seconds (timing continues in the background)
- ❸ Making up the measured time: (the chronograph hands are quickly advanced to the ongoing measured time).
- ❹ Stop: (Final time is displayed.)
- ❺ Reset: The chronograph hands are returned to their zero position

### Please note:

\* Following ❸, further intervals or intermediates can be displayed by pressing push-button B (display interval / make up measured time, ...).

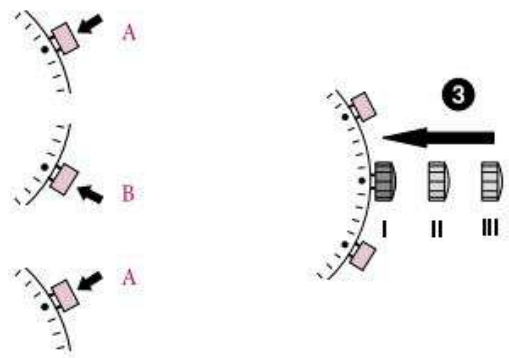
## ADJUSTING THE CHRONOGRAPH HANDS TO ZERO POSITION



### EXAMPLE:

One or several chronograph hands are not in their correct zero positions and have to be adjusted (e.g. following a battery change)..

- ❶ Pull out the crown to position III (all chronograph hands are in their correct or incorrect zero position.)
- ❷ Keep push-buttons A and B depressed simultaneously for at least 2 seconds (the second counter hand rotates by  $360^\circ$  → corrective mode is activated.)



### ↓ ADJUSTING THE SECOND COUNTER HAND

Single step ↗ A 1 x short  
Continuous ↗ A long



### ↓ ADJUSTING THE NEXT HAND B ↗

Adjusting the minute counter hand (position 6h)

Single step ↗ A 1 x short  
Continuous ↗ A long



### ❸ Returning the crown to position I

Termination of the chronograph hands adjustment (can be carried out at any time).