



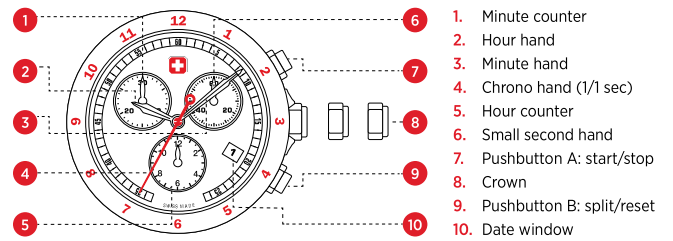
SWISS MILITARY
HANOWA

5030.D

INSTRUCTION MANUAL | BEDIENUNGSANLEITUNG | MANUEL D'INSTRUCTIONS
INSTRUCCIONES DE USO | ISTRUZIONI PER L'USO

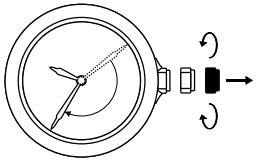
操作指南 取扱説明書 사용 설명서 ИНСТРУКЦИЯ ПО ЭКСПЛУАТАЦИИ دليل التعليمات

CHRONO & DATE

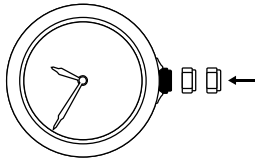


SET THE TIME

SET

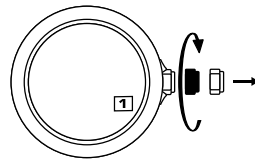


RESET

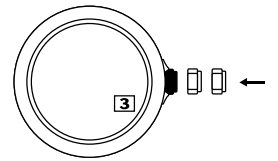


SETTING THE DATE

SET

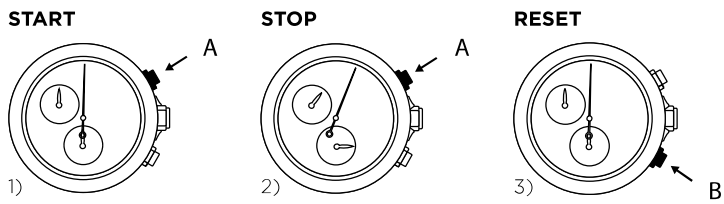


RESET



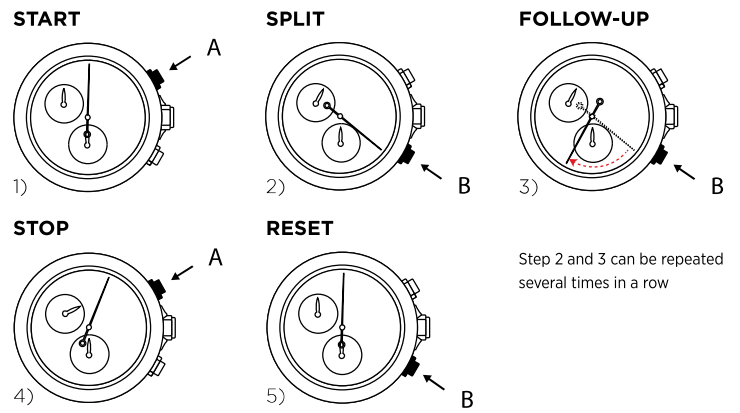
During the date changing phase between 9:00PM and 12PM; the date must be set to the date of the following day.

MEASURING THE CUMULATIVE TIME



Step 1 and 2 can be repeated several times in a row

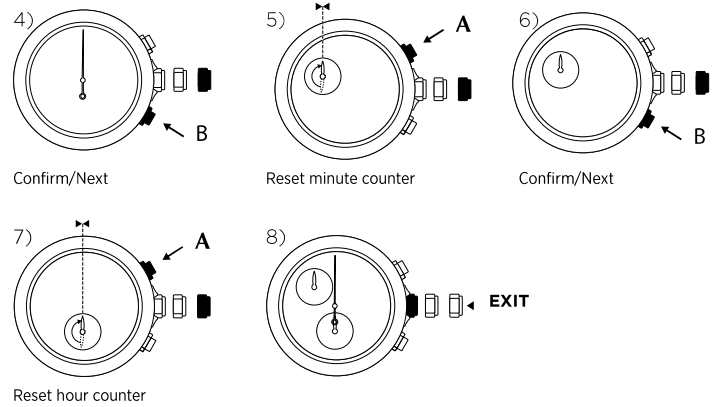
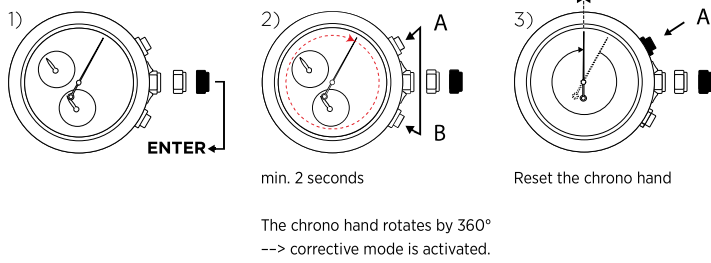
MEASURING THE SPLIT TIMES



Step 2 and 3 can be repeated several times in a row

REINITIALIZING OF CHRONO- AND COUNTER HANDS

Following a battery change, an incorrect actuation, violent impact or exposure to a strong magnetic field, the chrono hand, and/or the counter hands may fail to revert to their original position (0). To calibrate chrono- and counter hands, proceed as follows:

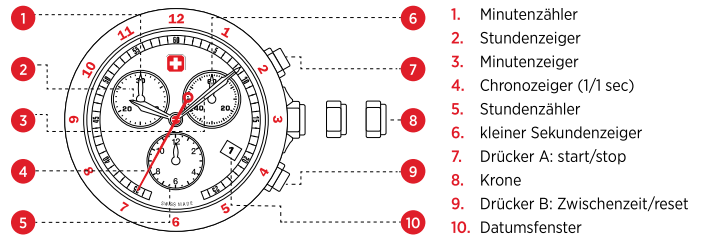


Caution: Make always sure that the crown is in the pushed-in position in order to ensure the water resistance of the watch. Pushbuttons A/B and crown should never be operated under water.



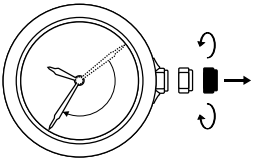
Battery type:
395 - SR57

CHRONO & DATUM

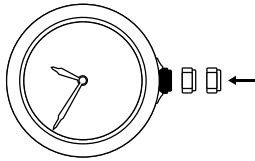


EINSTELLEN DER ZEIT

SET

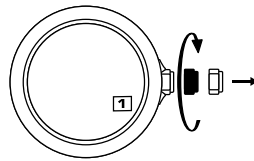


RESET

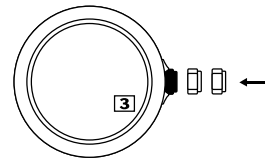


EINSTELLEN DES DATUMS

SET



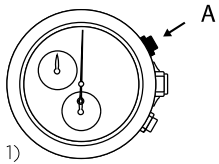
RESET



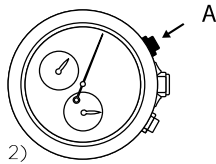
In der Kalenderschaltphase zwischen 21:00 und 24:00 Uhr muss das Datum des folgenden Tages eingestellt werden.

MESSUNG DER KUMULIERTEN ZEIT

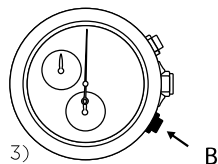
START



STOPPEN



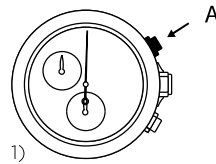
ZURÜCKSETZEN



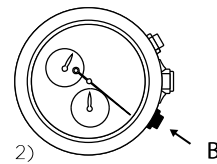
Schritt 1 und 2 können während einer Zeitmessung beliebig oft wiederholt werden.

MESSUNG DER ZWISCHENZEITEN

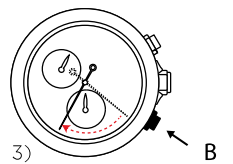
START



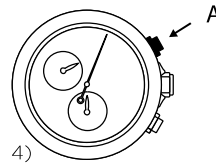
ZWISCHENZEIT



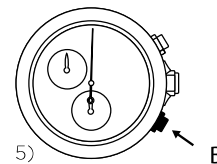
FORTSETZEN



STOPPEN



ZURÜCKSETZEN



Schritt 2 und 3 können während einer Zeitmessung beliebig oft wiederholt werden.

KALIBRIERUNG DES CHRONOZEIGERS UND DER ZÄHLER

Nach Batteriewechsel, einer falschen Betätigung, starkem Aufprall oder nach dem Einwirken starker magnetischer Felder, kann es vorkommen, dass der Chronozeiger und/oder die Zähler nicht automatisch auf ihre Ursprungspositionen (0) zurückgehen.

Um die Zeiger zurückzusetzen, gehen Sie wie folgt vor:

