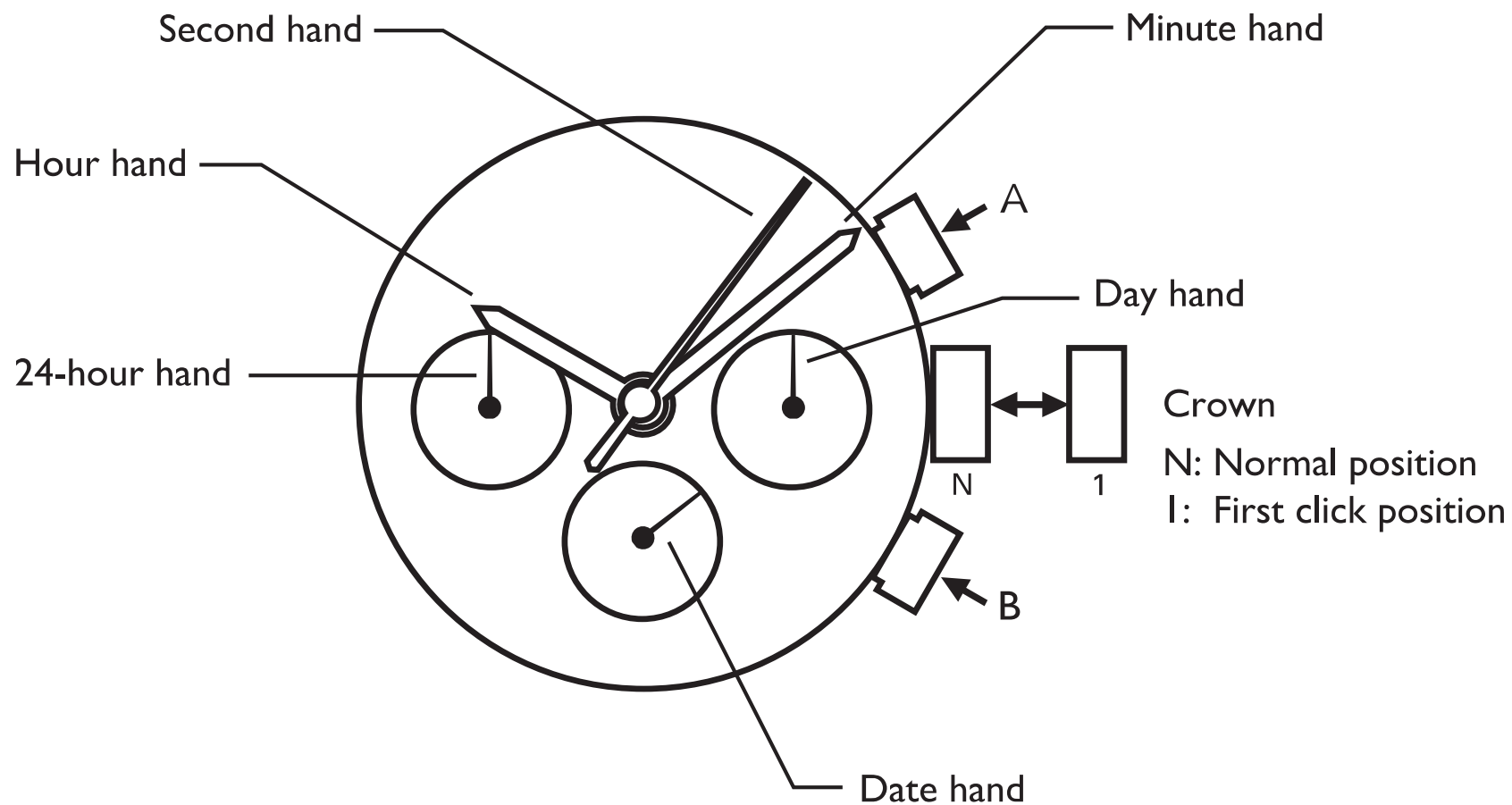


# CERRUTI 1881

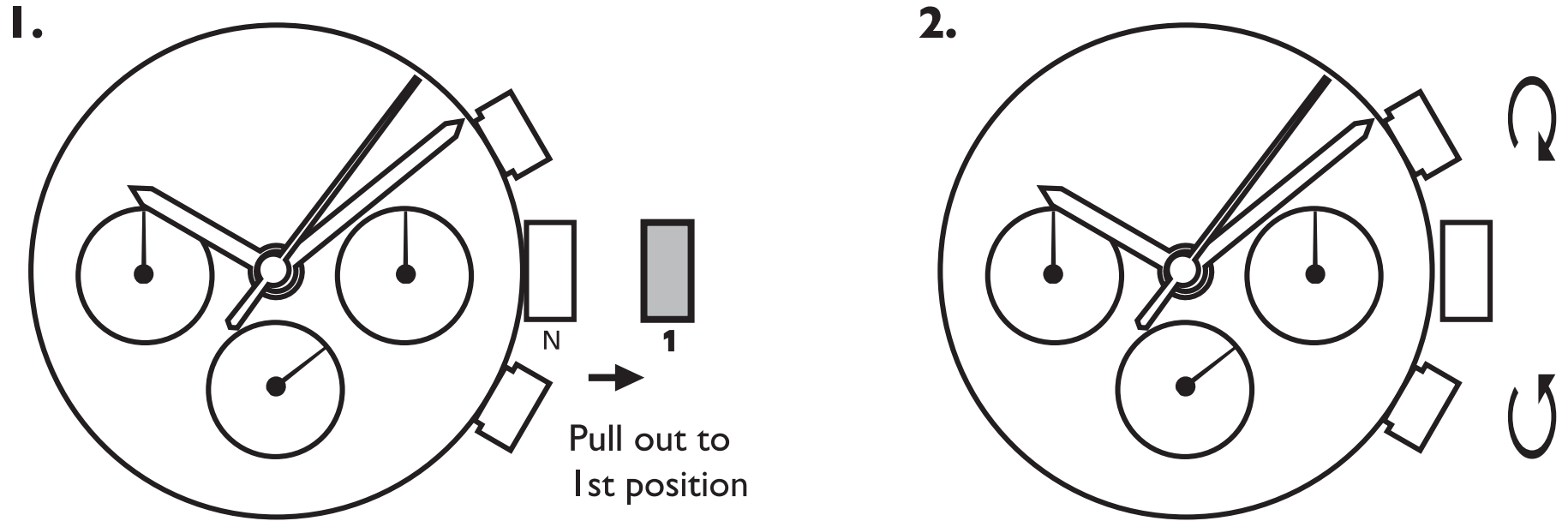
**VX9J**  
INSTRUCTION MANUAL

## Features

- Hour, minute and second hands
- Day, date and 24-hour indicators



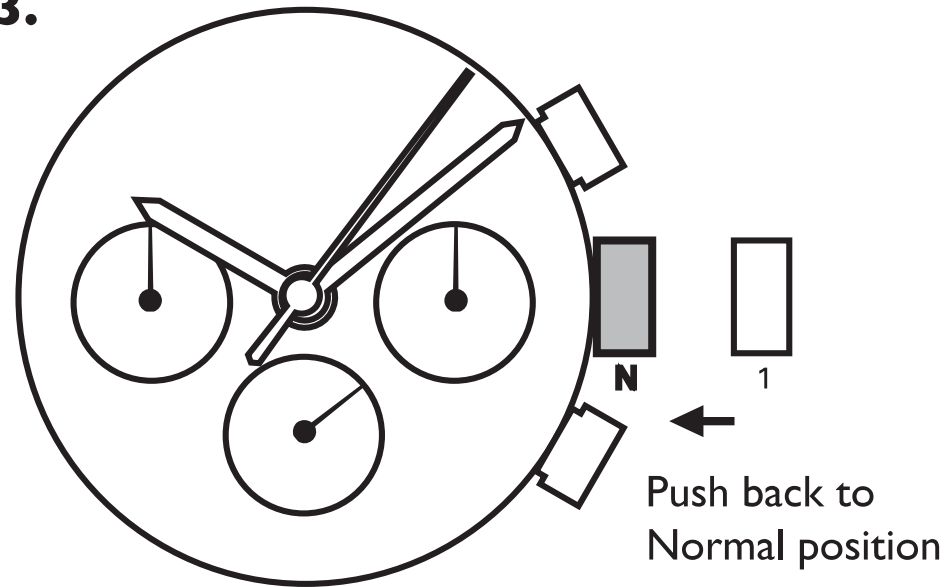
## How to set time



- Pull the crown out to the 1st click position when the seconds hand is at the 12 o'clock position.

- Turn to set the time taking AM/PM into consideration.

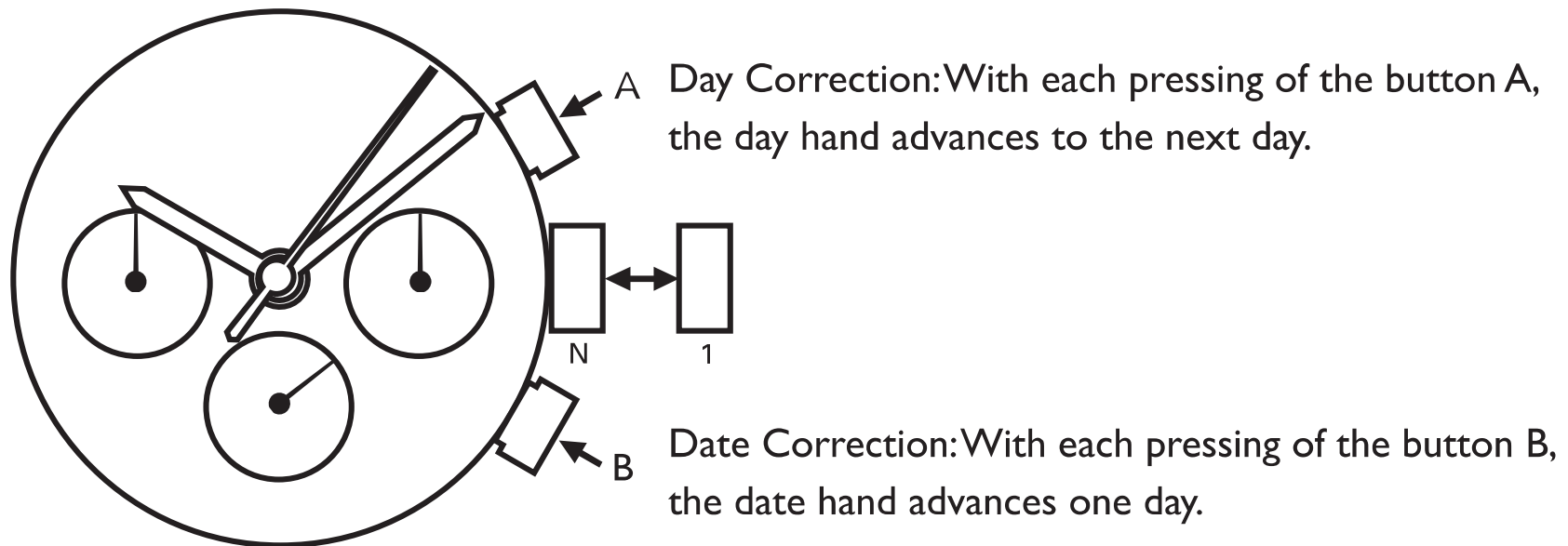
**3.**



- Push the crown back to the normal position.

- Advance Setting Technique.
- The 24-hour hand moves correspondingly with the hour hand.
- When setting the hour hand, check that the 24-hour hand is correctly set.
- When setting the minute hand, advance it 4 to 5 minutes ahead of the desired time and then turn it back to the exact time.

## How to set date and day of the week



- Note
- Do not set the date and the day hands between 9:00 p.m. and 4:00 a.m. Otherwise, they may not move properly.
- While setting the date and the day hands, check that they move properly in one-day increments.
- It is necessary to adjust the date on the first day after a 30-day month and February.